

# VERITON-CT Series

360° CZT Digital SPECT/CT



**SPECTRUM**  
DYNAMICS MEDICAL

[www.spectrum-dynamics.com](http://www.spectrum-dynamics.com)

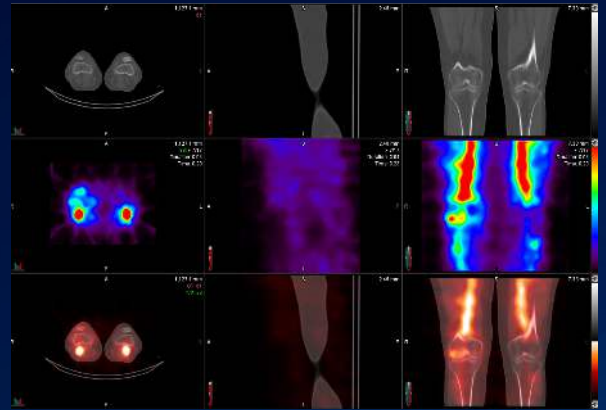
# VERITON-CT<sup>®</sup> SERIES

## Transform Your Nuclear Medicine Department

**Access the benefits of 360° digital SPECT/CT for the full range of Nuclear Medicine clinical applications.**

Nuclear medicine requires modernization to continue to thrive. Upgrading from analog technology to digital SPECT/CT lets you perform faster scans, achieve higher quality images, and reap all the benefits of digital technology.

Spectrum Dynamics' VERITON-CT Series combines the best-in class CZT detectors, novel system design, high resolution CT, and advanced image reconstruction algorithms with high energy imaging up to 400 keV<sup>1</sup>. With fast 3D Total Body scanning you have quantitation-ready images in under 30 minutes.



Real-Time 4D SPECT/CT

VERITON

SPECTRUM  
DYNAMICS MEDICAL





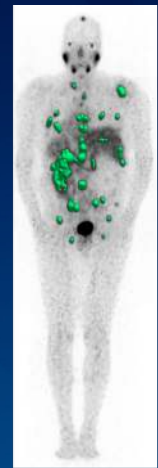
With VERITON-CT, nuclear medicine care centers worldwide can:

- Scan the full range of radionuclides used in Nuclear Medicine
- Optimize for efficient 3D imaging: organ focused or Total Body
- Rely on consistent and efficient imaging protocols for scanner throughput and patient care

1. Not commercially available in some countries.  
Please contact your local representative for regional availability.



3D Total Body SPECT/CT



Tumor Burden	
Size:	862.9 ml
Max:	94.6 SUV bw
Mean:	13.1 SUV bw
Total:	11,278 SUV×ml

3D Quantitative Analysis



*Reaching Higher Peaks  
with Digital SPECT/CT Imaging*

# VERITON-CT<sup>®</sup>

## SERIES

## Transform Your Technology

### The gold standard of 360° CZT Digital SPECT/CT

Spectrum Dynamics' unique implementation of CZT solid-state detectors has established the design as the gold standard of CZT-based SPECT cameras used in Nuclear Medicine.

The VERITON-CT SPECT/CT integrated digital platform handles routine 3D workflow to streamline and optimize every step, from image acquisition to advanced quantitative reconstruction to data analysis and review. It is designed to support nuclear medicine diagnostic imaging and research applications with its superior energy resolution, sensitivity and multi-energy imaging capabilities.

When you invest in VERITON-CT, you configure CT scanner slice options and energy range to suit your budget and throughput requirements.

### Gantry Specifications

Detector #	12
Max bore size	80 cm
Min bore size	23 cm
Axial Field of View	32 cm
Energy range	40 – 400 keV <sup>1</sup>

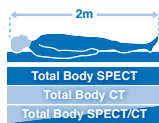
### Table specifications

NM/CT scan range	2.0 m
Max weight	500 lbs / 226 kg

1. Not commercially available in some countries.  
Please contact your local representative for regional availability.



**BroadView Technology**  
High sensitivity swiveling digital detectors



**Total Body 3D Imaging**  
200cm hybrid scan range, real-time body contour



**Wide Bore SPECT/CT**  
80 cm NM and CT



**16/64**  
**High Resolution CT**  
Choice of 16sl or 64sl, low dose CTAC



**TruView Console**  
Acquisition, reconstruction and advanced quantitative analysis in one location



**Performance**  
Reaching new peaks in digital SPECT imaging up to 400 keV<sup>1</sup>



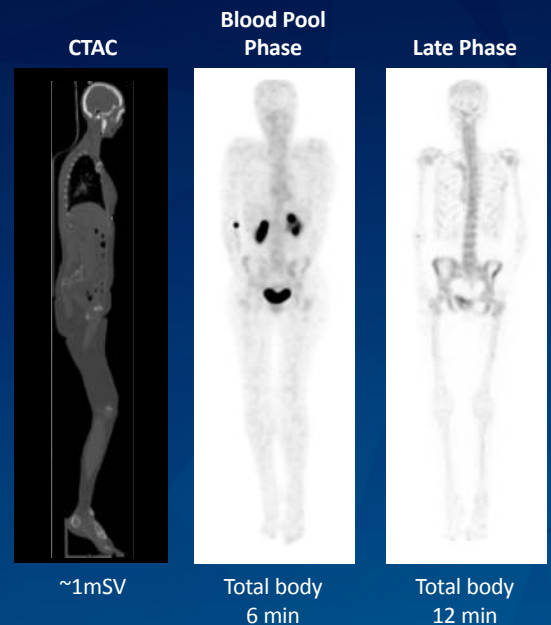
## Transform Your Workflow

### Streamlined Clinical Care Path, no compromises

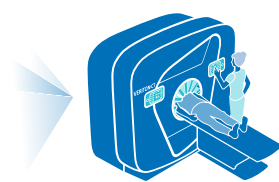
Spectrum Dynamics integrated its groundbreaking BroadView Technology design into the VERITON-CT system, providing a digital platform that improves the clinician’s ability to guide clinical therapy, improve clinical outcomes, and enhance the patient experience – all in one place. Significant improvements in sensitivity and resolution drive a paradigm shift in workflow.

#### Our hybrid workflow provides:

- CT-Based SPECT Scan Optimization
- Quantitative Reconstruction
- 4D Dynamic Acquisition and Post Processing
- Advanced Reconstruction Options
- Advanced CT Image Quality Options



**Digital Technology**  
360° design for high sensitivity and coverage



**Workflow** is reproducible and optimized for patient needs



**Image quality** tools in TruView Console for advanced reconstruction and artifact reduction for both NM and CT data



**Quantitative analysis** accessible in TruView Console integration with Hermia platform



**Comprehensive results** from transformative technology that provides a greater volume of high quality data for informed decision-making

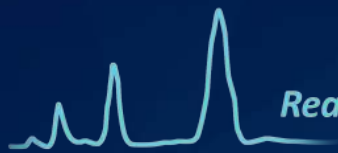
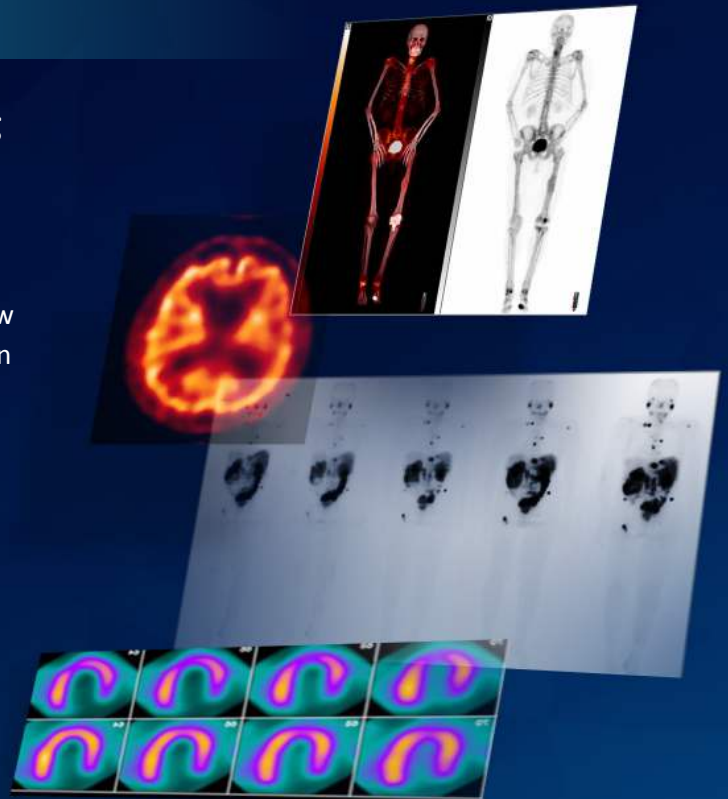
# VERITON-CT<sup>®</sup> SERIES

## Evolve with the Industry

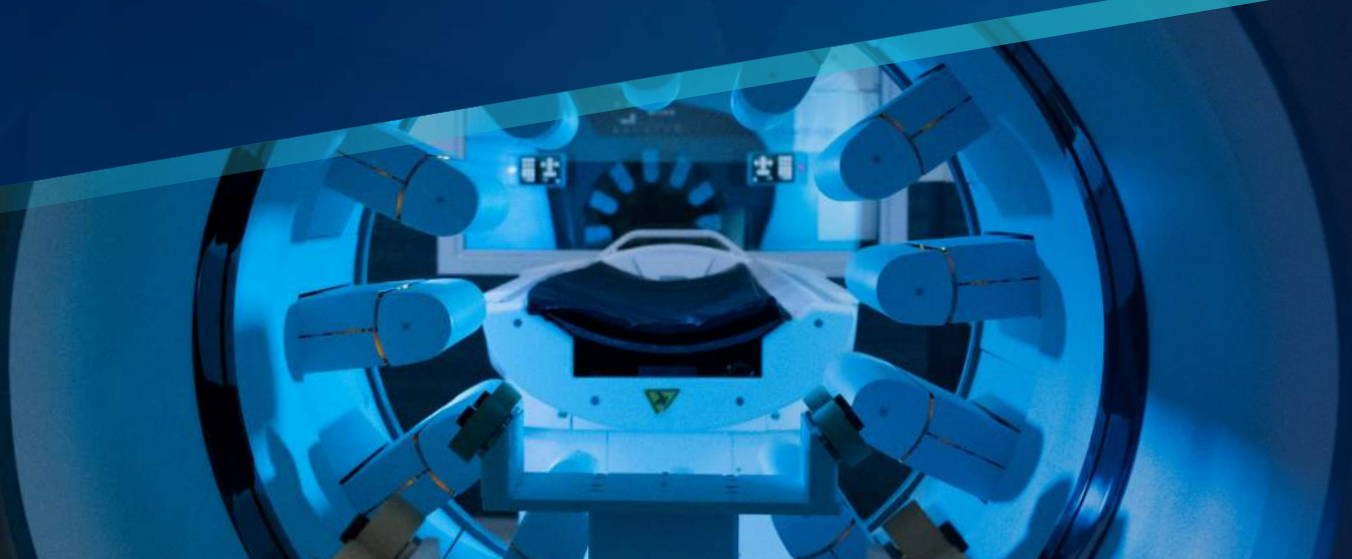
### VERITON-CT Series brings routine 3D scanning to your imaging department

Don't let your imaging department get left behind. With a state-of-the-art VERITON-CT Series SPECT/CT scanner, you have the foundation for growth, with the technology for new types of procedures and patients. Execute the next generation of clinical applications, add new imaging capabilities, and shift to routine 3D imaging for Total Body and other imaging applications.

Spectrum Dynamics delivers continuous innovations to keep your department on the leading edge of Nuclear Medicine imaging.

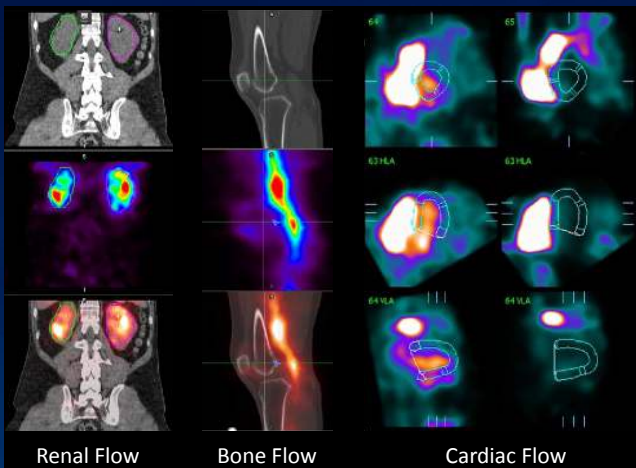


Reaching **Higher Peaks**  
with Digital SPECT/CT Imaging





**SPECTRUM**  
DYNAMICS MEDICAL



#### TruFlow Dynamic Imaging

Now, with TruFlow dynamic imaging, VERITON-CT offers real-time 4D imaging to capture the radiopharmaceutical distribution, uptake, or clearance over time in 3D SPECT/CT quantitative imaging. Clearly identify and localize abnormalities.



# Contact Us

Spectrum Dynamics Medical appreciates the opportunity to share our Nuclear Imaging solutions with you. To learn more about our products, services and how we can help you, please contact us.

**Spectrum Dynamics  
Medical HK Limited**  
Unit 1001, 10/F,  
Mira Place Tower A  
132 Nathan Road,  
Tsim Sha Tsui  
Kowloon, Hong Kong

**Spectrum Dynamics  
Medical SA**  
Rue de Lausanne, 31  
1110 Morges Switzerland  
Tel: +41 21 544 4710  
Fax: +41 21 544 4711

**Shanghai Guangmai  
Medical Technology  
Limited**  
708, Block A, No. 300,  
Shuiyun Road, Pudong New  
District, Shanghai, China  
Tel: 021-58281680

**Spectrum Dynamics  
Medical, Inc.**  
301 North Cattlemen  
Road, Suite 109  
Sarasota, FL 34232  
Tel: +1 941 256 3541  
Fax: +1 941 256 3832

**Spectrum Dynamics  
Medical Japan K.K.**  
Uchikanda TK building 6F  
South, 1-5-13 Uchikanda  
Chiyoda-ku, Tokyo Japan  
Tel: +81 3 5843-9304  
Fax: +81 3 5843-9305

